



Joint Programming Initiative on Cultural Heritage and Global Change (JPI CH)

Exploiting results and future opportunities

Alexandre, JPI Cultural Heritage



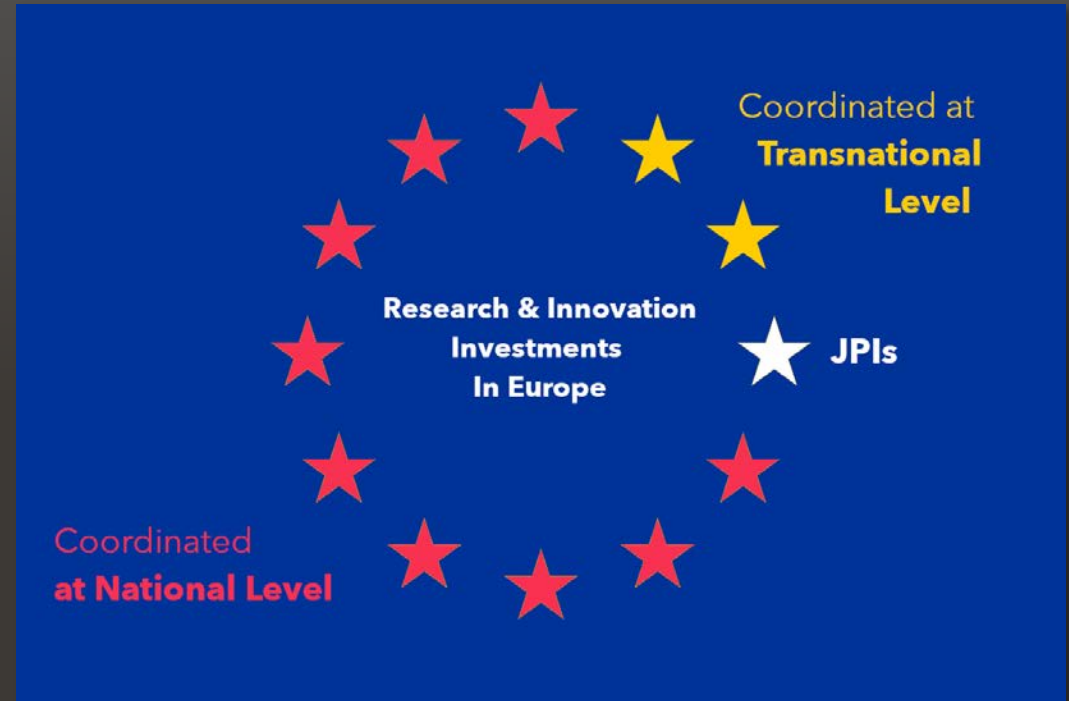
What is Joint Programming?

- Concept introduced by the EC to the European Parliament and the Council of European Union in 2008.
- Aiming to address the so-called Grand Societal Challenges that no country or region can tackle alone, to better implement the European Research Area (ERA).
- Member States-led process enabling to participate in joint research programming activities that are strategically important and offer synergies.
- Bringing together national research funding organizations, ministries and research councils both in Europe and beyond.



What is Joint Programming?

- Avoid duplication and fragmentation for a better use of EU Member States and Associated Countries' public R&I resources.
- Better align the 85 per cent of research and innovation investments spent at national level
- Engage in concerted and joint planning, implementation and evaluation of national research and innovation programmes to define common priorities.
- Shared political visions needed to respond to these grand challenges are translated in the form of commonly agreed Strategic Research and Innovation Agendas (SRIAs) that can also take into account diverse stakeholder needs.



The 10 Joint Programming Initiatives



JPND
www.jpnd.eu
secretariat@jpnd.eu



MYBL
www.jp-demographic.eu



OCEANS
www.jpi-oceans.eu
jpioceans@rcn.no



CLIMATE
www.jpi-climate.eu
secretariat@jpi-climate.belspo.be



URBAN EUROPE
www.jpi-urbaneurope.eu
info@jpi-urbaneurope.eu



HDHL
www.healthydietforhealthylife.eu
jpihdhl@zonmw.nl



AMR
www.jpamr.eu
Secretariat.jpamr@vr.se



CULTURAL HERITAGE
<http://jpi-ch.eu>
info@jpi-ch.eu



WATER
www.waterjpi.eu
waterjpisecretariat@agencerecherche.fr



FACCE
www.faccejpi.com
FACCE-Secretariat@inra.fr



The JPI Cultural Heritage and Global Change

The JPI CH has been launched in 2010, coordinated by Italy. It is now coordinated by the French Ministry of Culture (MC) since 2018, with the support of the Fondation des Sciences du Patrimoine (FSP), the Ministry of Higher Education, Research and Innovation (MESR) and its funding Agency, the National Research Agency (ANR).

Its **Vision document**, published in 2010, identified 3 major challenges:



Probe the relation between Cultural Heritage and one of the most serious drivers of future change for communities - climate change.

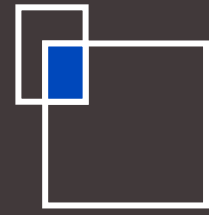


Probe the issues of protection and security of Cultural Heritage.



Probe the relation between the protection of Cultural Heritage and the uses of CH by society i.e. the transformational challenge of Cultural Heritage.





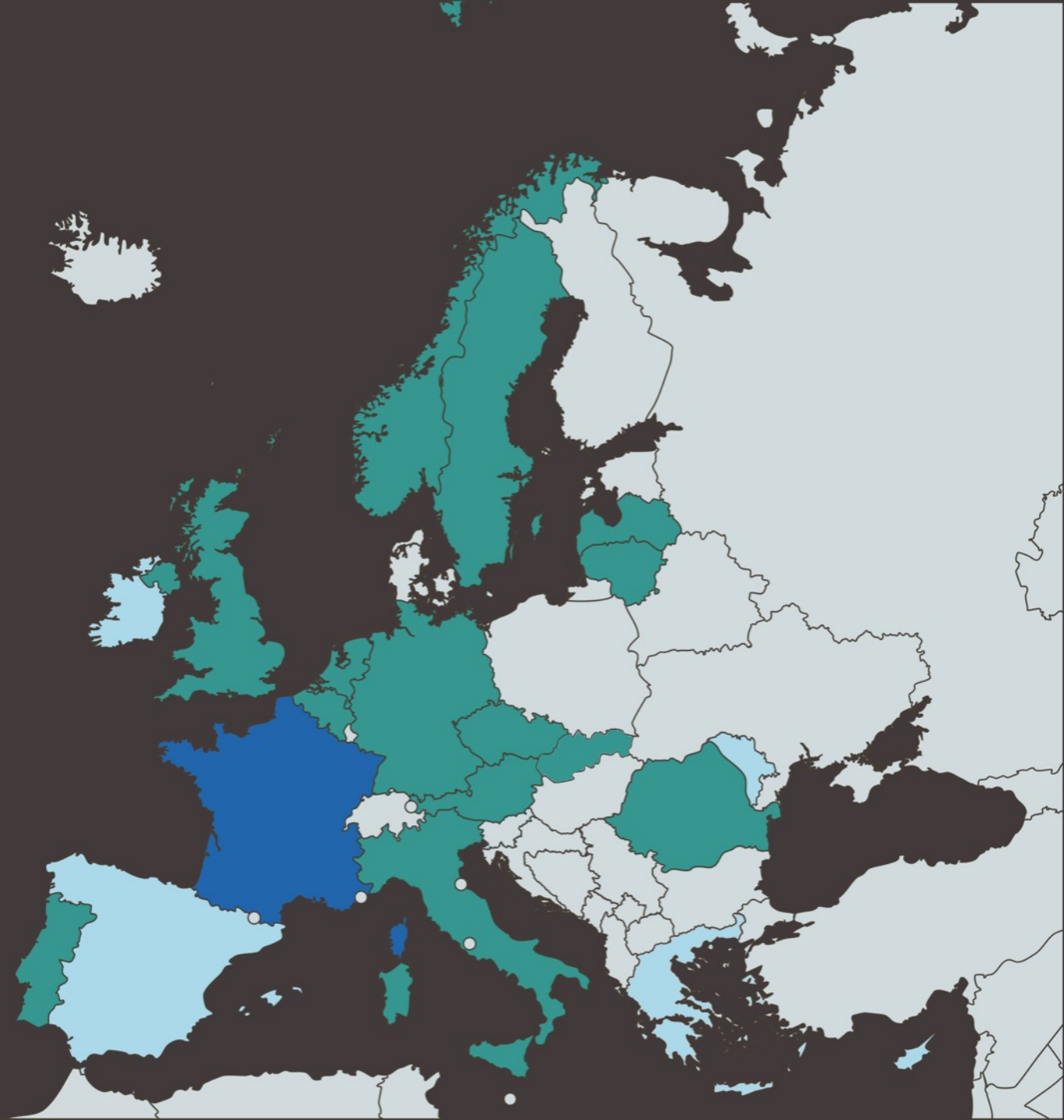
JPI CH Members

Full Members: 15

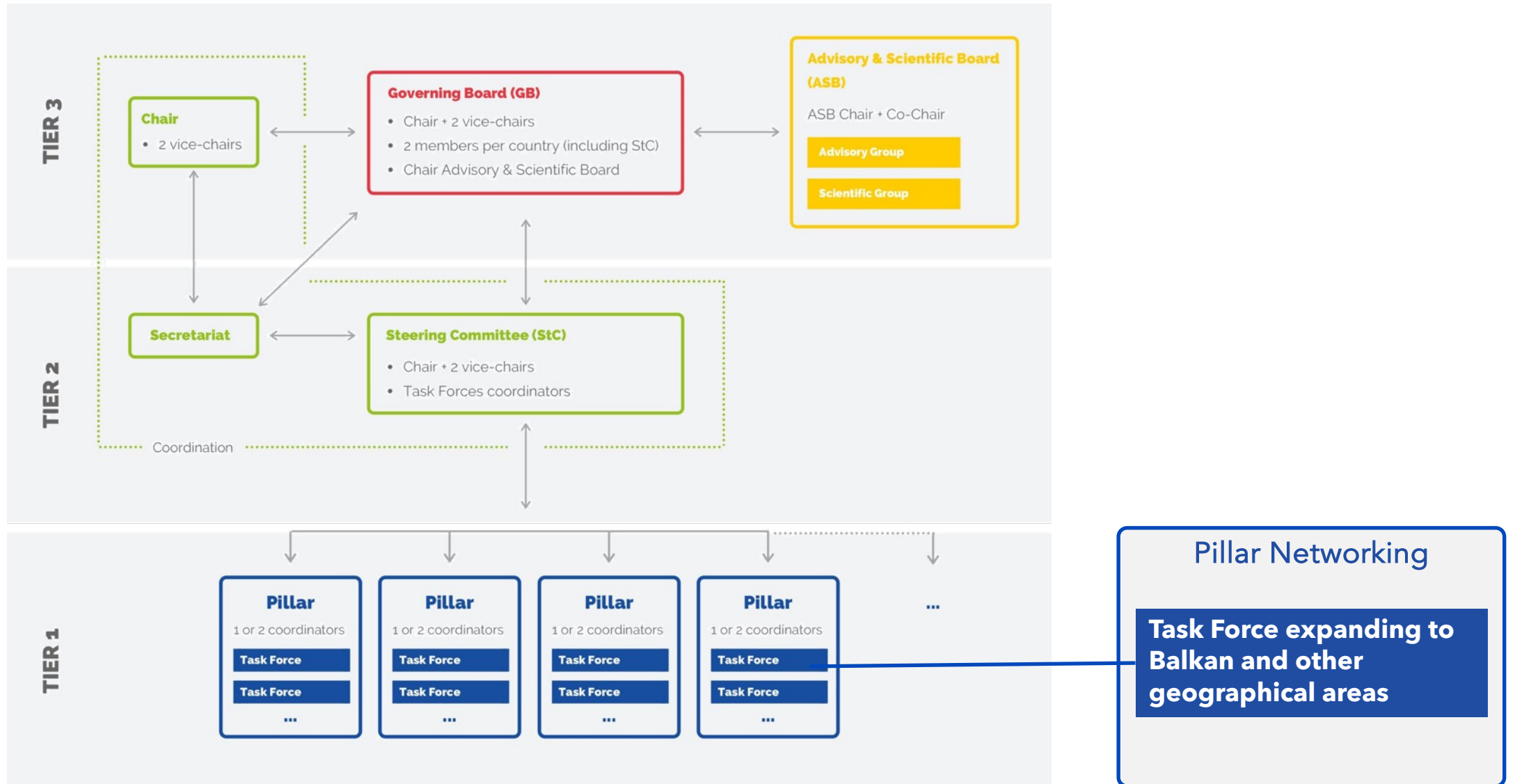
Observers: 5

Austria
Belgium
Czech Republic
France (Coord.)
Germany
Italy
Latvia
Lithuania
The Netherlands
Norway
Portugal
Romania
Slovakia
Sweden
United Kingdom

Cyprus
Greece
Ireland
Moldova
Spain



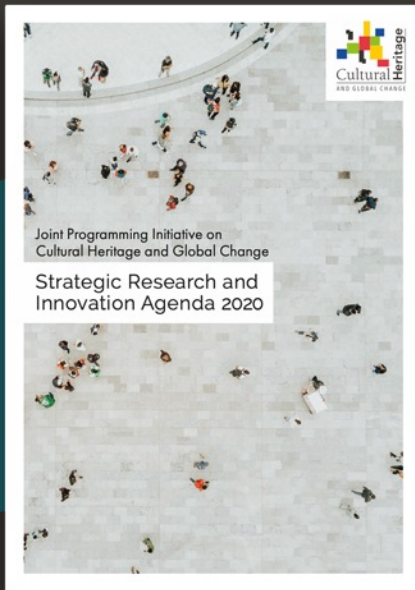
Governance



Strategic Planning

Strategic Research & Innovation Agenda 2020 (SRIA)

The SRIA 2020 builds on the SRA 2014 and reflects the political, economic, socio-cultural and technological changes in recent years. It capitalises on the increasing policy developments both within Europe and beyond, demonstrating the intrinsic and instrumental values of heritage. The document identifies the following underlying research and innovation principles:



Holistic Approach*

Collaborative and transdisciplinary research

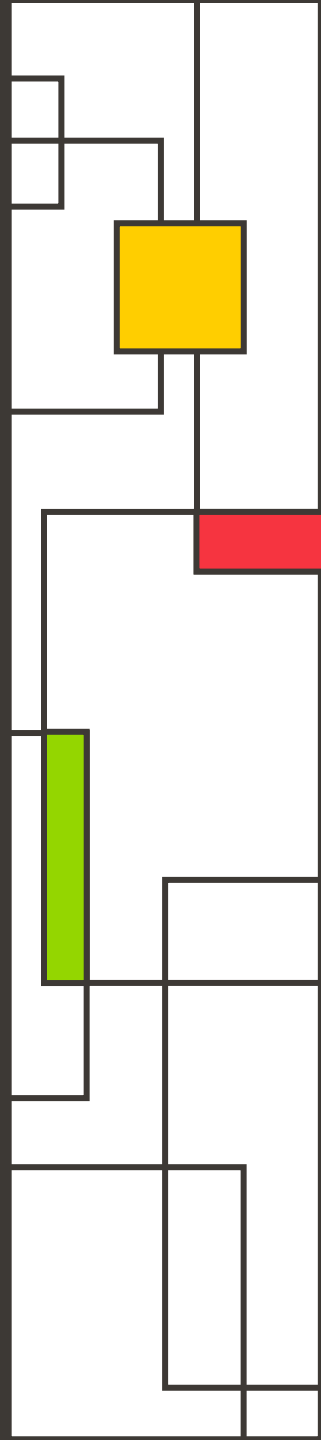
Public-led research and community engagement

Digital

Education and training

Communication, dissemination and impact

Working with other initiatives and infrastructure



SRIA 2020 - Four Priority Areas

1

A REFLECTIVE HERITAGE FOR A RESILIENT SOCIETY

Cultural heritage for society; cultural heritage for inclusion.

2

SUSTAINABLE MANAGEMENT OF CULTURAL HERITAGE

Governance and management; Conservation; Cultural heritage in a digital age.

3

CULTURAL HERITAGE IN A CHANGING CONTEXT

Territorial and demographic changes; Sustainable tourism; New threats.

4

CH FACING CLIMATE AND ENVIRONMENTAL CHANGE

Measuring and responding to the impact of climate and environmental changes on cultural and natural heritage; Cultural and natural heritage as resources for sustainable development.



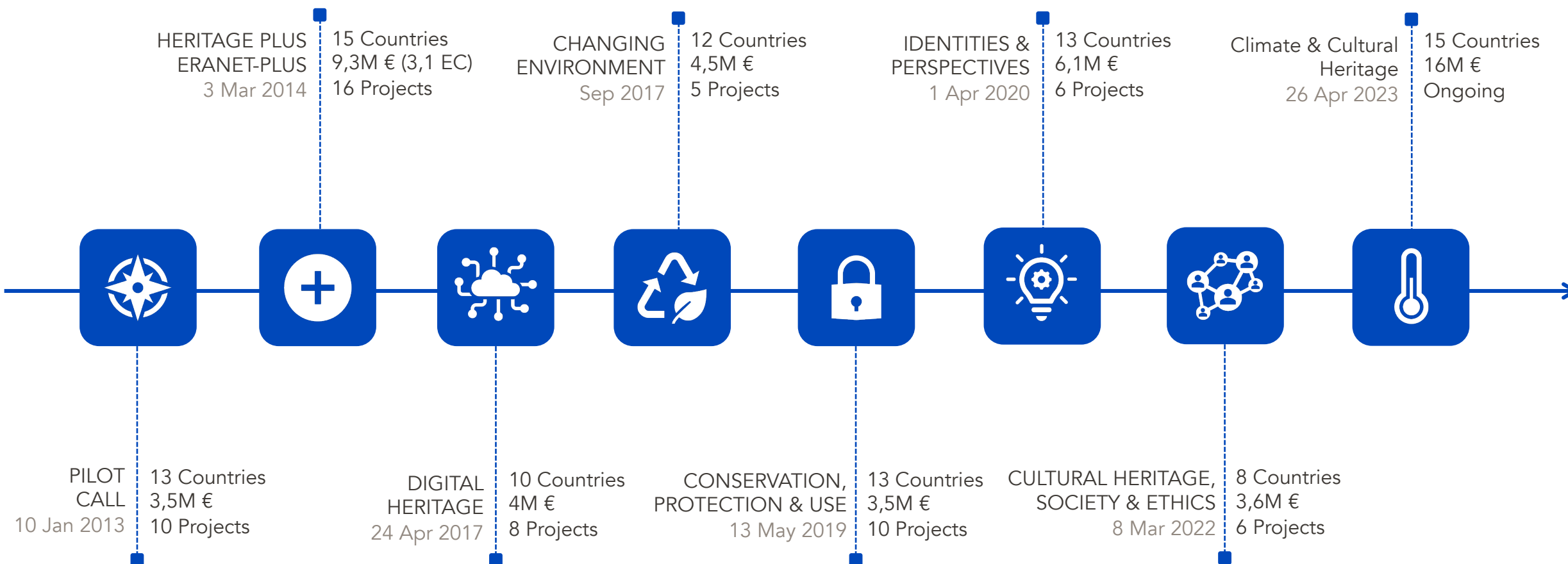
Programming and Funding

8
calls launched

61
projects funded

316
partners involved

32,6 M
euros awarded



Climate & Cultural Heritage Joint Call

Closed, 16M € Engaged



Austrian Research Promotion Agency on behalf of the Austrian Federal Ministry of Education, Science and Research



Ministry of Education, Youth and Sports of the Czech Republic



French National Research Agency



Ministry of Universities and Research



Research Council of Lithuania



Dutch Research Council



Research Council of Norway



Agencia Estatal de Investigacion



Swiss National Science Foundation



Arts and Humanities Research Council



National Science Foundation



Belgian Science Policy Office



The Scientific and Technological Research Council



Irish Environmental Protection Agency



National Research Council of Thailand

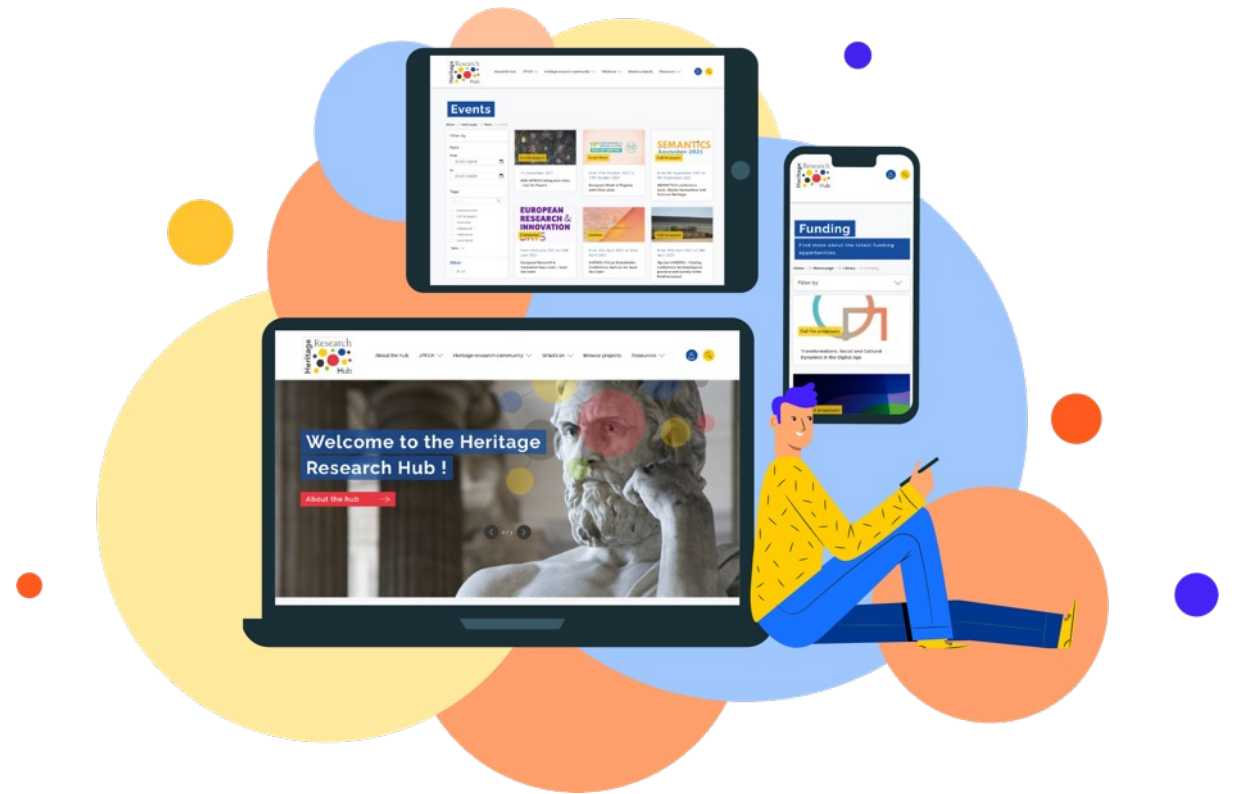
Call Topics:

Climate change is having an increasing and lasting impact on our environment and society. This is the context within which cultural heritage - tangible and intangible - is threatened by well-known, new and more extreme risks:

- The Impact of Climate Change on Cultural Heritage;
- Cultural Heritage as a Resource for Climate Mitigation and Adaptation;
- Sustainable Solutions for Heritage.

Results expected in December 2023

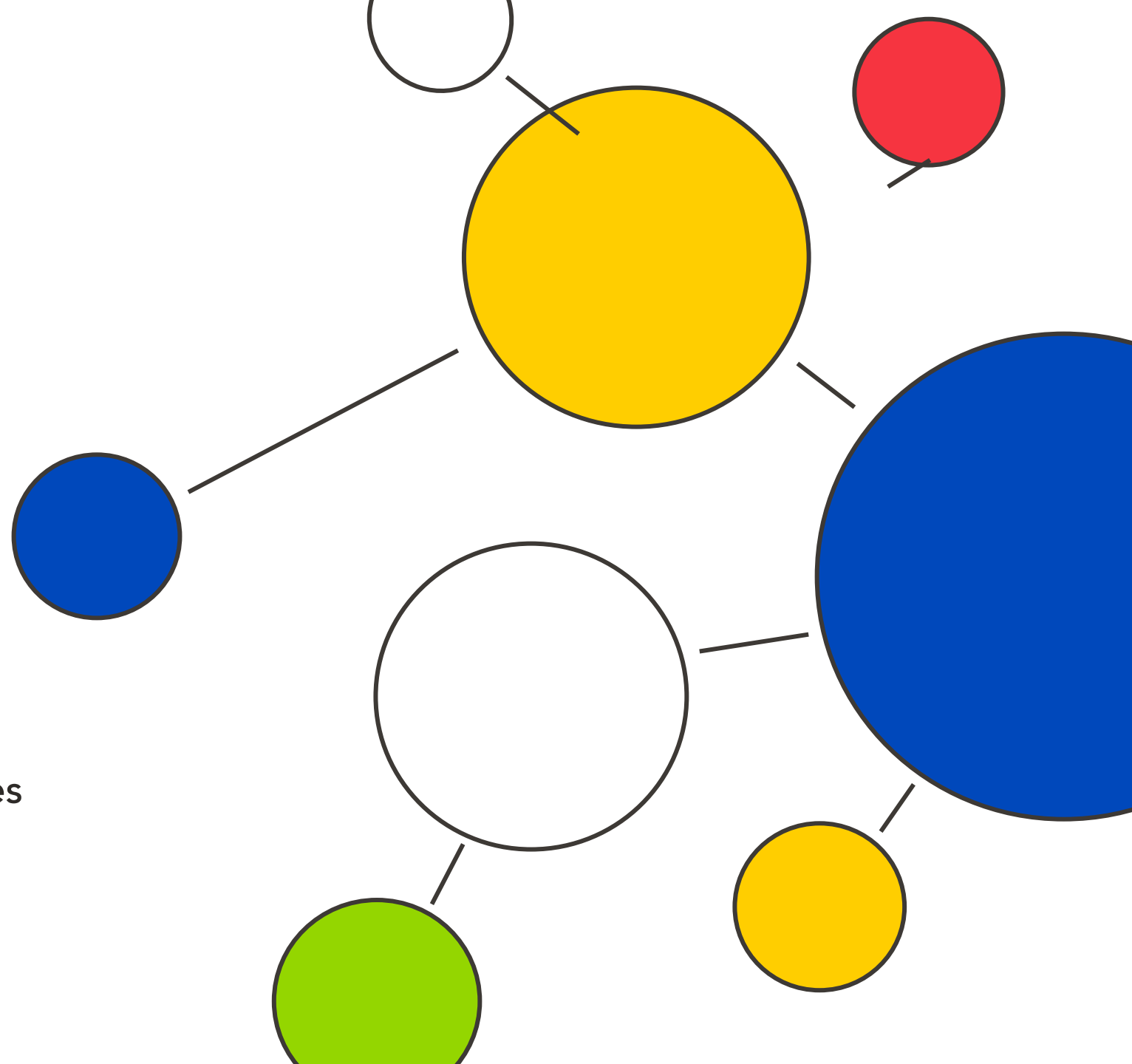
Communication and networking



HeritageResearch-Hub.eu

It aims to:

- Create an online location where everyone who works in or with cultural heritage- related research can share and search for different contents,
- Inform about the cultural heritage research general framework by introducing the heritage research policies, the various stakeholders involved or research projects;
- Collect and display online resources on and for heritage research;
- Provide information about the JPI CH and its activities.



From JPI CH to ARCHE

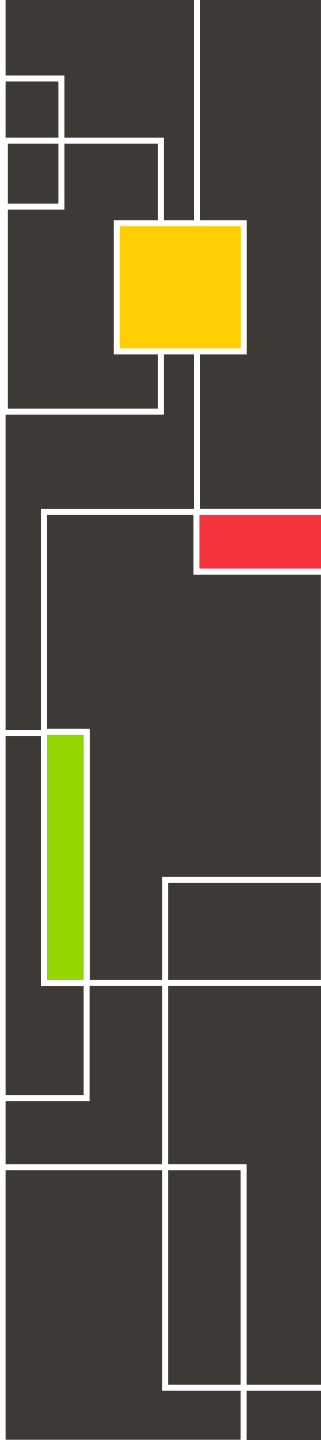


ARCHE (Alliance for Research on Cultural Heritage in Europe)

- 24 partners from 18 countries;
- Project launched in September 2022 for 3 years;
- Prepare, in collaboration with the European Commission, a proposal for a **European Partnership on Cultural Heritage** to be implemented from 2025 to 2032 and beyond;
- European Partnerships are initiatives in which the EU Commission and private and/or public partners commit themselves to **jointly support** the development and implementation of a research and innovation program in a specific domain;
- Identifying European Partnerships is an integral part of **Horizon Europe's strategic planning process**, and their budget contributed by the EU Commission, comes from Horizon Europe, especially from the thematic clusters in Pillar 2.
- Budget for this new partnership is estimated around **200 to 300 M€** for 2025-2032.



Funded by
the European Union





Resilient Cultural Heritage Partnership proposal

This new Partnership proposal aims to:

- strengthen the means of preserving Europe's cultural heritage;
- contribute to climate neutrality in other sectors by bringing forward traditional and innovative practices, techniques and materials resulting from CH research.

“CH has the potential to provide affordable and accessible answers to the problems of climate change and to contribute to limiting its impact on our societies, their living heritage, cultural landscapes and natural environment.”

The following specific objectives should be achieved by 2030:

1. Stimulate interdisciplinary research and knowledge exchanges between several European regions, which although geographically disparate, present common challenges;
2. Disseminate new knowledge, techniques, skills, strategies and materials for sustainable preservation, conservation, and management of climate-related risks in the CH field as well as preventing from other man-made related risks such as pillaging and illicit trafficking;
3. Contribute to the implementation of the European Framework for Action on Cultural Heritage.

https://research-and-innovation.ec.europa.eu/news/all-research-and-innovation-news/commission-proposals-new-candidate-european-partnerships-are-now-public-2023-07-17_en



Other opportunities (1)

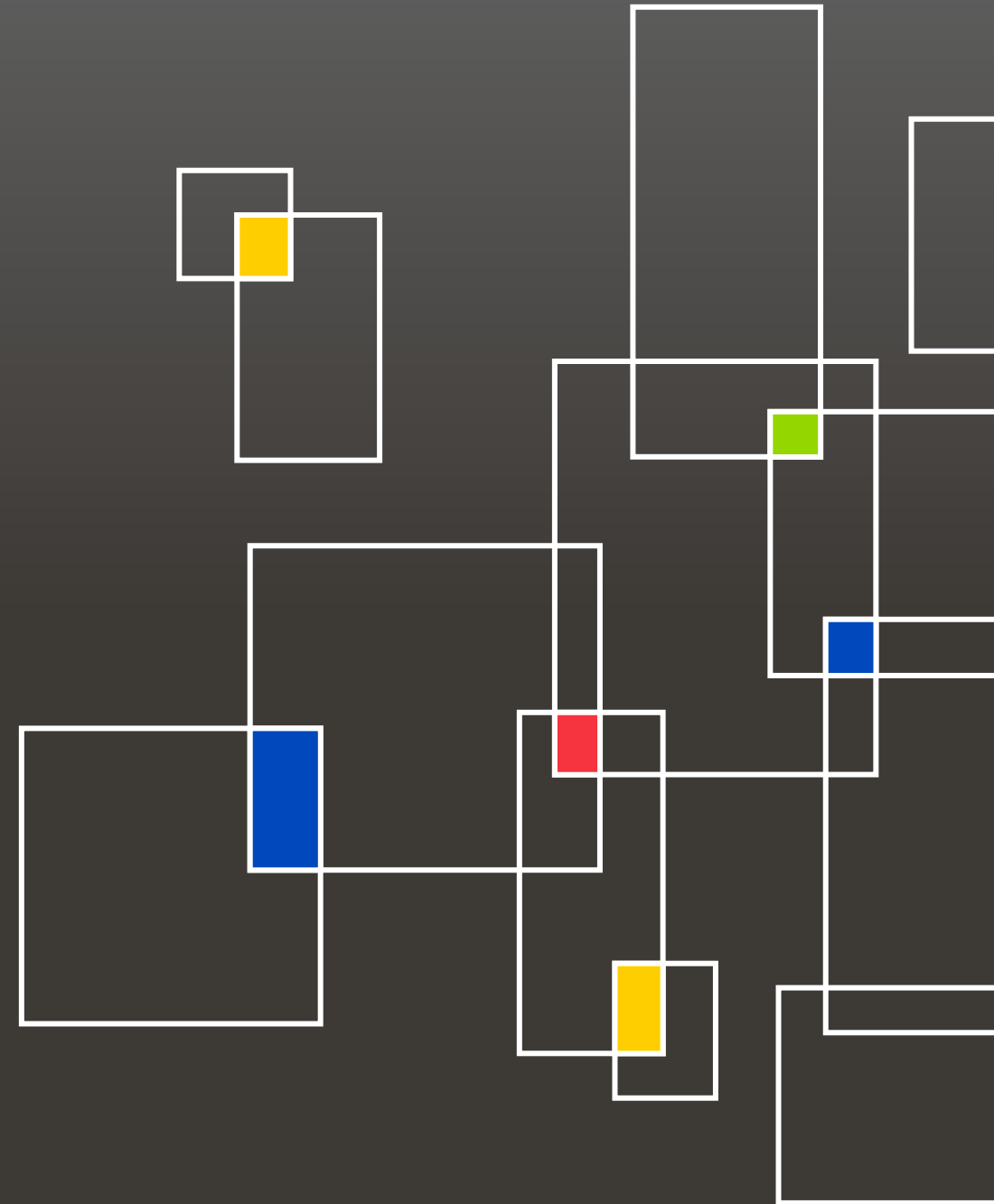
- 2024 work programme from Horizon Europe Cluster 2, Destination 2 "Culture, Creativity and Inclusive Societies" Infoday, 18 October: <https://research-innovation-community.ec.europa.eu/events/2oQugg5jdh3x8gWvkBREF0/overview>
- 2025-2027 work programme still under construction.
- The Widening participation and strengthening the European Research Area Work Programme 2024 (WIDERA). The scheme is aimed at improving research and innovation performance in poorer EU countries. Brokerage event the 9th November: <https://horizon-widera2024.b2match.io/page-711>

Example: SD-WISHEES, "Supporting and Developing Widening Strategies to tackle Hydroclimatic Extreme Events: impacts and Sustainable solutions for cultural heritage" (IT, BE, GE, RO, FR, PT, AL)



Other opportunities (2)

- Marie Skłodowska-Curie Actions (MSCA)
 - MSCA Staff Exchanges 2023 (05.10.23 / 28.02.24)
 - MSCA Staff Exchanges 2024 (10.10.24 / 05.03.25)
- The 7 Most Endangered Programme: launched in January 2013 by Europa Nostra with the European Investment Bank Institute as founding partner, supported by the Creative Europe programme as well; small grants for tangible and intangible CH assets preservation.
- **CulturEU Funding Guide**
EU Funding Opportunities for the Cultural and Creative Sectors 2021-2027:
<https://culture.ec.europa.eu/funding/cultureu-funding-guide/discover-funding-opportunities-for-the-cultural-and-creative-sectors>
- **Creatives Unite page**
<http://www.creativesunite.eu/sym/>



Other opportunities (3)

- **Western Balkan Info Hub**

Source of targeted information on research, technology and innovation but also education, culture, youth and sports in, with and for the Western Balkans.

<https://wbc-rti.info/>

- **ERRIN: European Regions Research and Innovation Network**

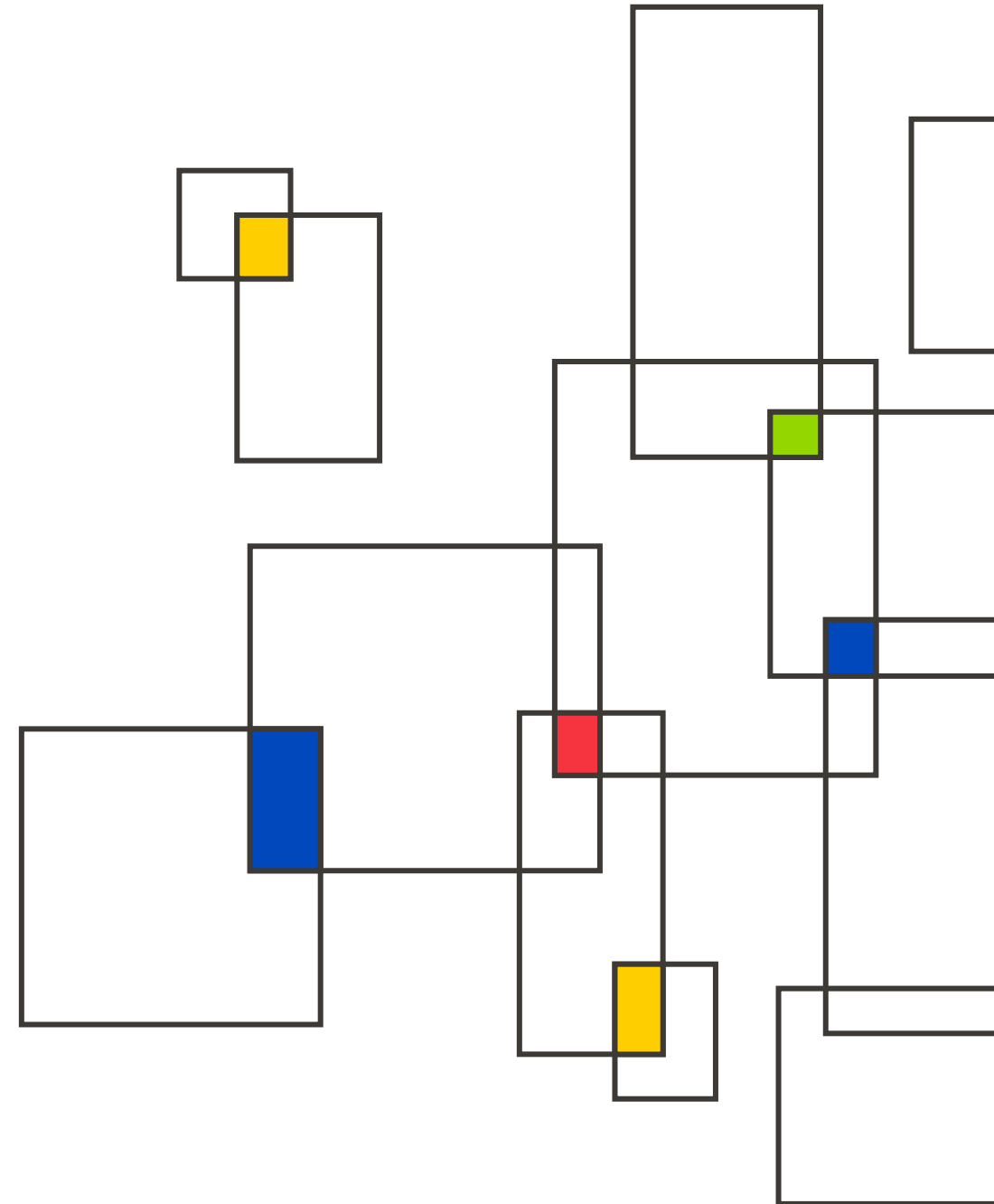
Brussels-based platform gathering around 120 regional organisations from more than 20 European countries and supporting members to enhance their regional and local research and innovation capacities and further develop their R&I ecosystems. Several working groups, and one on Cultural Heritage and Tourism.

- **Associated countries Horizon Europe (October 2023)**

Albania, Armenia, Bosnia and Herzegovina, Faroe Islands, Georgia, Iceland, Israel, Kosovo, Moldova, Montenegro, New Zealand, North Macedonia, Morocco, Norway, Serbia, United kingdom (imminent).

- **SMACH project: Sustainable MAnagement of Cultural Heritage in the Balkans in response to Climate Change:**

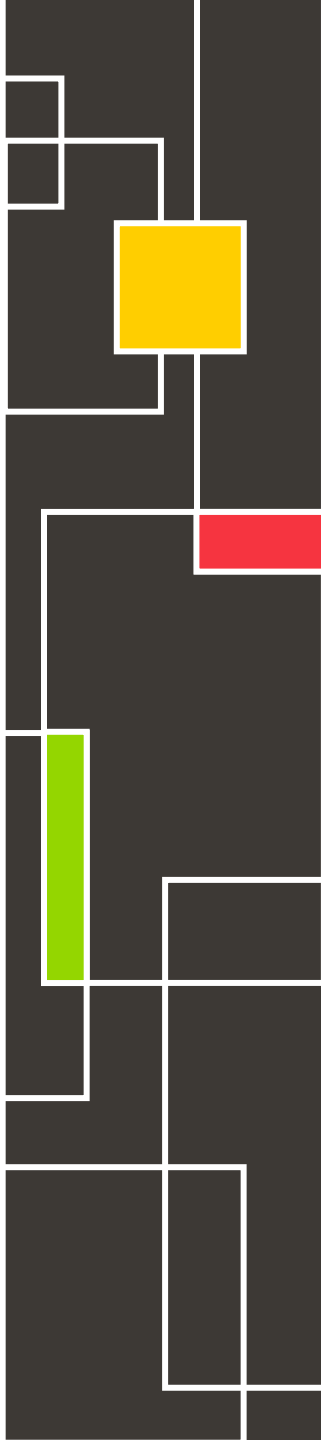
<https://smach.univiu.org/>



Other JPI CH-funded projects

- **GASTROCERT:** This project had two aims to explore how the development of local gastronomy could help to protect rural heritage values, and how entrepreneurial culture could enhance locally produced food as a value-added touristic experience.
- **REFIT:** Through research focusing on some of the most significant monuments in European history (Late Iron Age oppida: c.200BC-AD60), this project has explored how communities (including farmers, SMEs, wildlife organizations and residents) understand and experience cultural landscapes.
- **CULTIVATE:** CULTIVATE seeks to understand the role of cultural heritage in shaping sustainable landscapes and communities in the context of the climate emergency and transitions required to meet the Sustainable Development Goals (SDGs).
- **OLIVE4ALL:** The project proposes an experiment centred on a transmedia device that studies how carefully developed forms of mediation based on narration, sensoriality and digital technology can succeed in raising awareness among stakeholders and audiences far removed from heritage.
- **Revoicing Cultural Landscapes:** this project adopts a holistic view of the cultural landscape to identify new pathways to enabling citizens to shape meaningful, resilient, inclusive identity on the basis of ICH.
- **HerinDep:** The project deals with the decline of the European periphery resulting in the loss of intangible culture, abandonment and the degradation of buildings and landscapes, and people who struggle to give meaning to their lives in depopulated areas. The primary goal of the project is to explore how fragile local communities resist the consequences of demographic change.

Look for all projects on the [Heritage Research Hub](#).





**Thank You
For Your Attention!**

Find more and reach us at
HeritageResearch-Hub.eu

